

BlueTooth and Zumo 590

An exercise in setting up the Zumo 590 with a BlueTooth Headset and a BlueTooth Smart Phone or a 'ThickPhone'.

Phone calls on the move

Hear MP3 from Zumo or from Phone

Obtain live weather and traffic ahead on your route on the Zumo Screen.
(Smartphone only).

jfheath - October 2019 - Published on ZumoUserForums.co.uk



The Quick Method

Cutting out all of the detail and troubleshooting that follows.

1. Pair the Headset with the Zumo.
2. Connect the Zumo with the headset. Make sure that it works. If you have a rider pillion headset device, make sure that both are paired to the headset. Check they work with each other. Make sure the Zumo voice or MP3 can be heard through both headsets.
3. Pair your smartphone to the Zumo.

And that should be it. You need to follow the instructions that come with your headset as to how to pair. The information for the Zumo is on Page 6

The following pages show screen shots from the Zumo in case you need to do something manually, or in case another paired phone has somehow got involved.



Contents (Hyperlinks)

Starting from Scratch.....	3
<i>Set the Audio Input to MP3</i>	
Starting from Scratch.....	4
<i>Remove ALL Bluetooth Pairings.</i>	
What am I Aiming For ?.....	5
<i>A Quick Overview</i>	
Pair the Headset.....	6
<i>..to hear Music and navigation from the Satnav</i>	
Pair a Phone (optional).....	7
<i>In this case, I am pairing a bog standard 'thickphone'</i>	
Pair a Smartphone.....	8
<i>eg a Samsung Galaxy A7 running the Android OS.</i>	

Starting from Scratch

Set the Audio Input to MP3

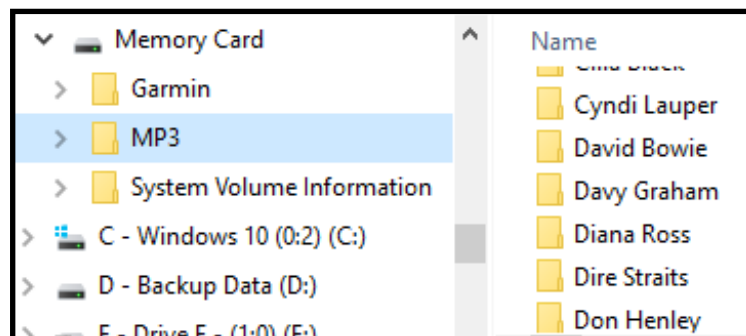
For this section I am assuming that the Zumo is in your hand and not connected to any audio input or output.

Apps → Media Player

You may get a screen like this which refers to Audio Line in. Or one which refers to Ipad, Bluetooth or shows the MP3 player.

In any case, select the double plug icon in the top left corner (circled) and check that if 'iPhone', 'Bluetooth' and 'Line In' are selected, a similar screen to the top one on the right is displayed. Then select the MP3 option from the scrollable list. Don't forget to click 'Save' and the media players shows a screen something like the fourth one on the right.

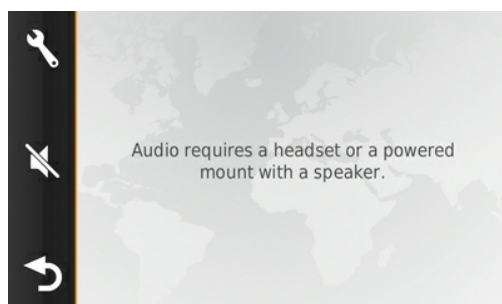
Make sure that your Garmin has an MP3 folder - it must be in capitals and it must be in either the Internal Storage folder, or on the root of the SD memory card. MP3 files can be placed directly into this folder, or arranged in subfolders. I have used a subfolder for each artist and subfolders within that for albums.



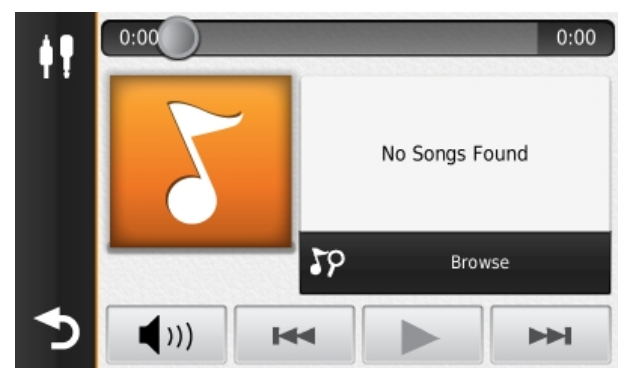
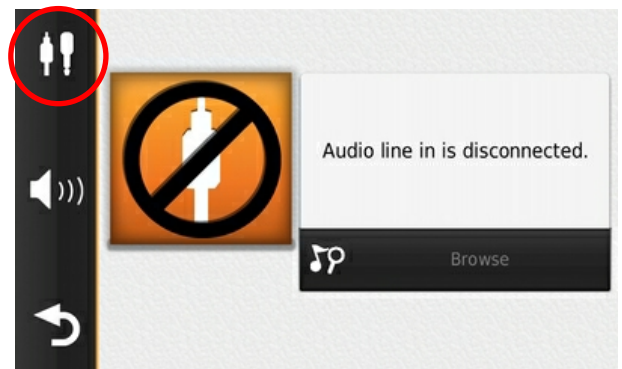
The player will find all of the MP3 files in both memory card and internal storage.

Make sure that you have at least one MP3 file saved, so that when you select MP3 as the input source, there is something for the MP3 player to play!

The controls of the MP3 player do not appear to work, but the ability to skip to the next track functions correctly, and pressing the speaker button causes this error screen to be displayed.



However, while fiddling around putting together these notes, I came back to the Media Player screen, and the track was half way through playing. No sound of course. I have yet to find out how this happened - it has done it a few times now !



Starting from Scratch

Remove ALL Bluetooth Pairings.

Settings → Bluetooth

When you first select Bluetooth, it may be disabled - like the screen on the right. Click the blank box and wait for any pairings to show up.

Eventually, you may get a screen like the one opposite - showing what devices have been paired previously, and how they are now connected to the Zumo.

We do not want this when we are first setting up the Zumo to talk to our devices. The reason being that we need to be quite particular about what information is coming to the Zumo on which 'channels' - and we cannot do that if things are already set up.

Furthermore - any devices that show up here that we have no intention of setting up with the Zumo need to be unpaired at both ends - ie at the Zumo and at the other device.

For example - I have no intention of using my Ipad Air to talk to the Zumo. So I need to unpair it at the Zumo, and tell my Ipad Air to forget about this connection. Otherwise it may well grab the connection to the Zumo before my Galaxy connects.

Unpair each device from the Zumo.

Eg - I am going to Unpair Ipad Air.

Select the device from the list (green circle).

The display opposite shows up - it says how the device is currently connected.

Click Unpair Device.

And then go to the Ipad Air, and in the BlueTooth settings, tell it to forget about the Jfh Zumo 590.

Do this for every device on the list in the Zumo.

Don't take short cuts - you'll probably regret it if you do.

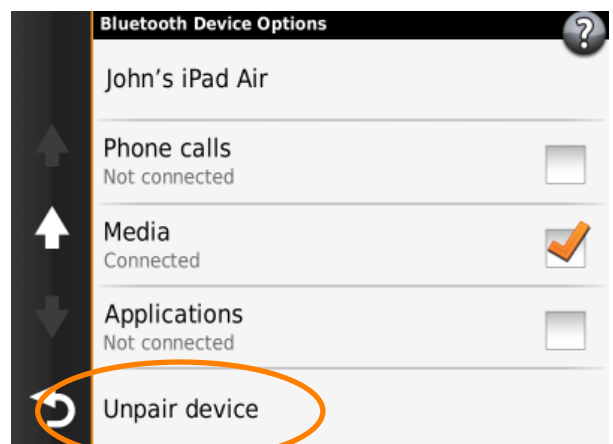
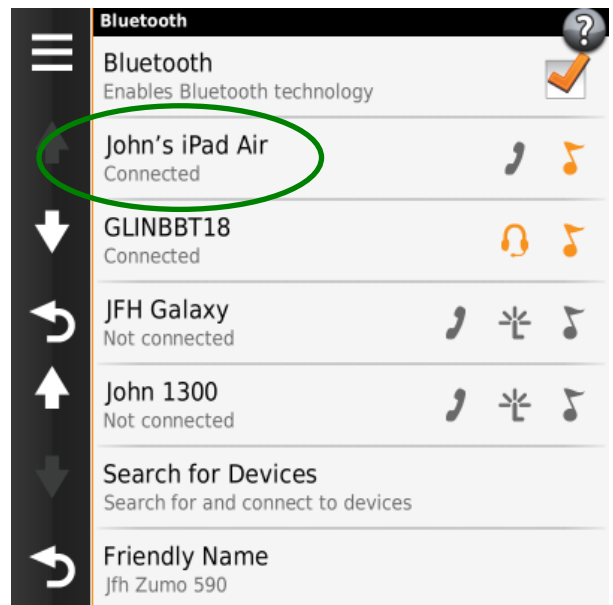
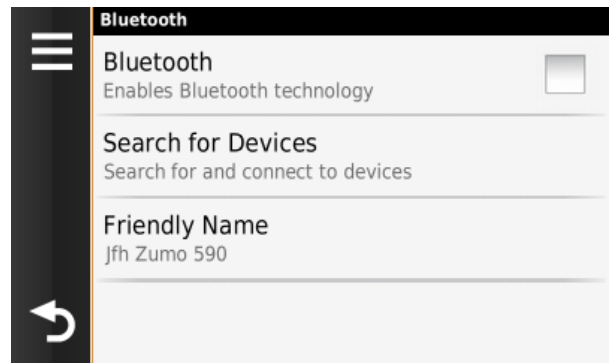
Stop Devices from 'Playing Away'

Now check that each device that you want to connect to you Zumo has not now connected to some other device. If it has, this will really frustrate the proceedings !

Check the Bluetooth Setup.

Main Page → Settings → Bluetooth.

Nothing is paired with the Zumo, so when you now select Bluetooth from the Settings Icon on the Main Page, you should see a screen like the one on the right.



What am I Aiming For ?

A Quick Overview

I am trying to find out which of my various BlueTooth devices I can connect successfully with the Zumo 590.

Devices:

John1300: Nokia 301i - which is a pretty basic phone by today's standards, but it works well with my current setup - I have a Bluetooth connection from this phone to the Zumo, and a wired Autocom connection for rider and pillion communication. The Zumo 590 has phone and music store capabilities.

JfhGalaxyA7: Samsung Galaxy A7 - Android Smartphone.

Phone, Music Store, Apps which will link to the Zumo - eg for traffic and weather information. It will also connect to the phone and play Music.

GLINBBT18 : Bluetooth Headset. This is not an in-helmet set. It is an in-ear stereo device with microphone. Tried and tested listening to music from the Galaxy. Cheap, cheerful and effective. I bought it to test out Bluetooth capability of the Zumo, while sitting at my desk, rather than with helmet on, on the motorcycle. The set up for something like a Senna, although different at the Senna end, is very similar at the Zumo end of the connection.

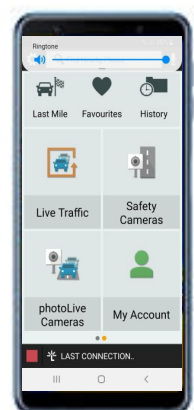
Around the house, there are a couple of other mobile phones, an Ipad v1 and an Ipad Air. All of which have been tested with the Bluetooth headset - so it knows about them, and I don't know how to make it forget !

I want to be able to :

- Receive and make phone calls through the Zumo
- Hear Music through the bluetooth headset from the Zumo MP3 folder or from the smartphone.
- Hear SatNav navigation instructions through the Bluetooth Headset.
- Get weather and traffic information displayed from the smartphone.

There may be other ways of doing this, but the first time I tried, the Bluetooth devices interfered with each other - ie they connected before I wanted them to, and prevented devices that I did want to connect from seeing the Zumo.

So pairing and connecting in a particular order seems to be important. What follows, worked for me.



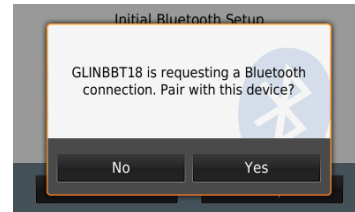
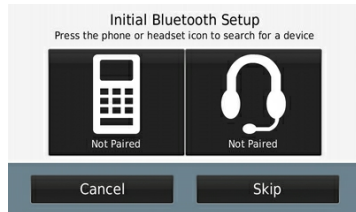
Pair the Headset

..to hear Music and navigation from the Satnav

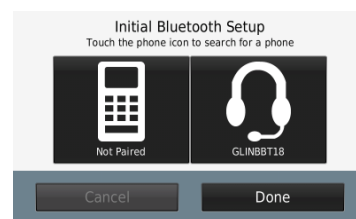
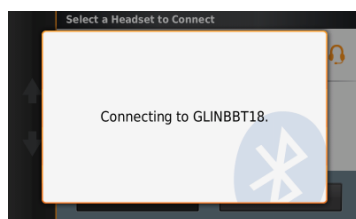
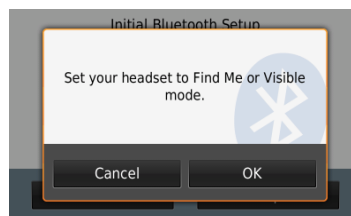
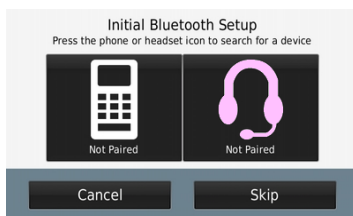
Settings→Bluetooth

The screen shows that no devices are yet paired with the Zumo. I can connect in one of two ways:

1. Turn on the BT Headset, and Zumo quickly recognises that it wants to pair. However, this doesn't seem to be very reliable, depending on what the Zumo / BT Headset has been paired with before.



2. A more reliable method is to press the Headset icon on the Zumo (shown pink in the image below), then activate the headset to begin pairing - now that the Zumo is ready for it.

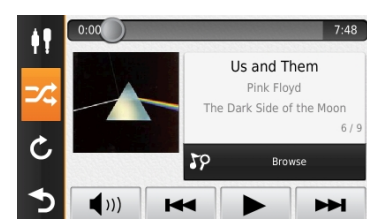
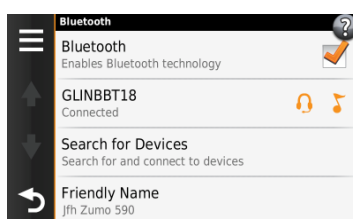


If the unit has been paired before; if you have dismissed the offer to pair on a previous attempt; if you have a BT device switched on that the headset may be trying to pair with; if you have done something else that I haven't thought of - these are all things that may prevent the two from pairing. There is no menu on my headset - I cannot tell it to forget a device and start again - although it does tell me to put it on charge in order to allow it to forget its last pairing. This didn't work ! Read your headset manual - it might help.

At some point the headset and the Zumo will pair up and you will see the final screen confirming the fact that a headset is paired, but not a phone. The phone is much easier to pair - but we need the headset to be set up before we can use the phone with the Zumo..

But first, some checks:

Open Media player and see if you can hear music being played through the BT headset. Turn on the Key clicks on the Zumo, to check that Zumo sounds are audible. (Volume → Tools Icon → Button Sounds).



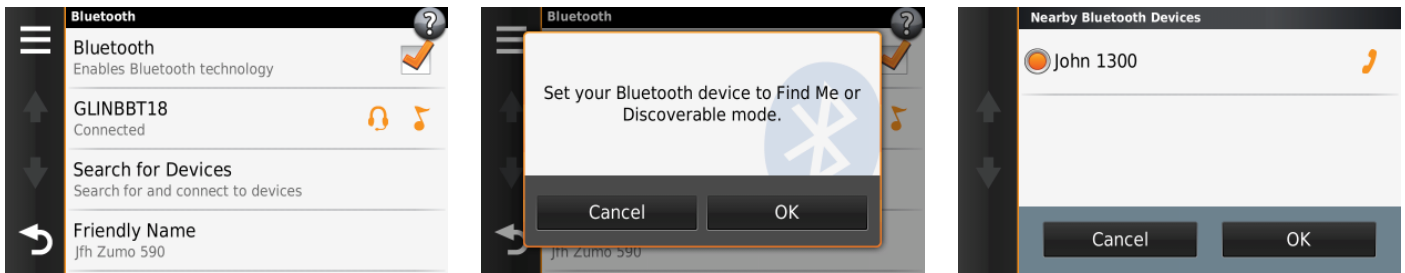
nb - by now you may have realised that if the Zumo is running on battery, it will turn off shortly after not being used - and when it does, it loses the Bluetooth connection. You may want to plug it into the charger while setting it up !

Pair a Phone

In this case, I am pairing a bog standard 'thickphone'

Make sure that the headset is already paired and working before doing this.

The sequence for pairing is different depending whether you initiate from the phone or from the Zumo. Also whether the device has been paired before. Use whichever method works best. Here I initiated the pairing from the Zumo.

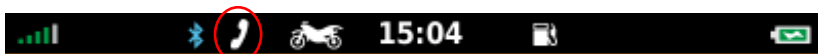


So 'thickphone' John 1300 has been paired and connected and this is confirmed in the list of paired BlueTooth devices in the display that follows - below, left. The orange icons indicate how the device is paired, and clicking on each named device in turn presents the screens which allow you to add or remove a connection type from each device, if you wish.



Note that both devices (the phone John1300 and the headset GLINBBT18) support media (they have an orange musical note alongside the name) - but they mean different things: The phone has an MP3 player built in and can send it out over BT. The headset is able to receive media from a device such as the phone. More on this later when I try to connect my Smartphone. It is worth noting these connections now that they are working. If they change later, you can restore them.

At this point, the phone is accessible from Apps → Phone, or by clicking the phone icon at the top of the main screen.



Any conversation is diverted to the headset earphones and mic.

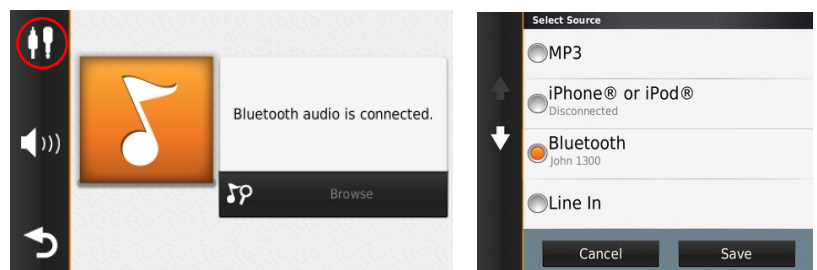


There are now two media inputs available - the Media Player on Zumo, which access any MP3 files that are stored in the MP3 folders on the memory card or in internal storage.

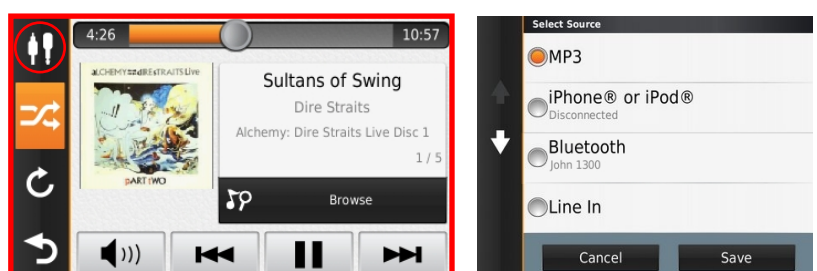
The other is on the phone I have just set up. In this case, there is no communication between the Thickphone John 1300 and the Zumo - the Zumo cannot control what is playing - But if the phone is playing something, it will relay it to the BT headset.

You can select which media device to use to send music to the headset by selecting the '2 plug menu' in the top left of Media Player.

If the John 1300 Thickphone is selected as the source of music for the media player you see something like the pair of images on the right. No pic, no controls, no volume.



If the MP3 on the Zumo is selected as the source of music for the media player, then the display on the right (outlined in red) is seen, with many more controls, and repeat and shuffle. No BT crackles either. Much better !

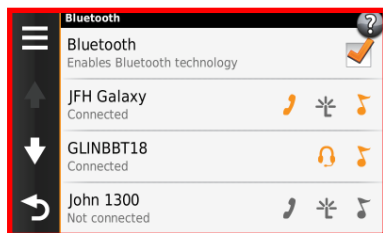


Pair a Smartphone

This is a Samsung Galaxy A7 running the Android OS.

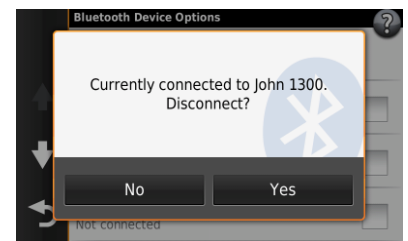
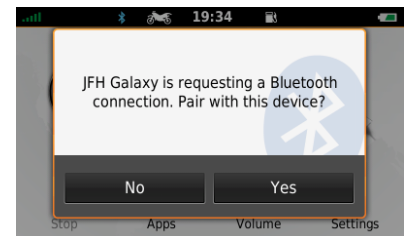
This time I initiate the pairing from the phone itself. I know that Bluetooth on the Zumo is on and that it will respond - which it does - eventually. So I go through the passkey process and when the pairing is complete, I get a rather unexpected message, telling me that the John 1300 (thickphone) will be disconnected if I connect the smartphone.

This wasn't in my plan. Naively, I thought that if I didn't connect the phone function on the smartphone, I could use the phone function on my thickphone. Not so - with the Zumo they are fighting over the same BlueTooth connection.



So I connect the smartphone (JFH Galaxy) and my thickphone - John 1300 - loses its connections. This can be seen in the screenshot, left, outlined in red.

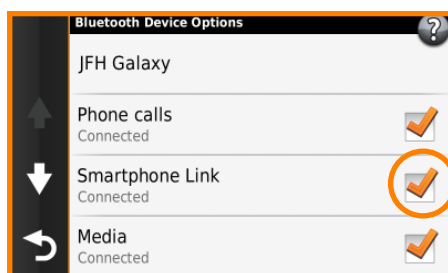
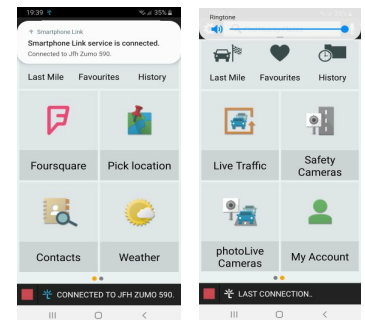
So the JFH Galaxy smartphone is now connected for phone calls and for music. It has taken all connections away from my thickphone - John 1300.



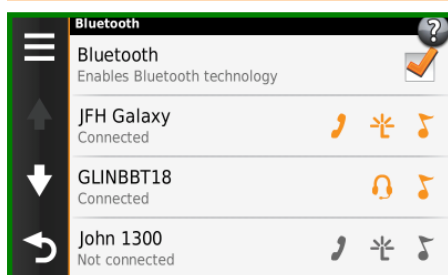
For JFH Galaxy, the centre icon of the 3 is grey - that is the icon for the smartphone link for data to the Zumo. That isn't set up at this stage.

For that to work, I need an App installed on the smartphone. Garmin Smartphone Link. This is available for free from the Google Play Store on android devices and also on the App Store for Apple IPad/IPod/IPhone devices.

When loaded, the JFH Galaxy Smartphone shows the two screens - shown on the right. Live Traffic and Weather are free (here in the UK anyway).



Once this is up and running, the Smartphone Link in the Bluetooth display for JFH Galaxy can be ticked as shown. In future, this will be done when the devices connect to each other, but not always when the facility has just become available.



So save that change and all 3 the connections for JFH Galaxy show as orange.

So there was absolutely no point in setting up the ThickPhone - except that is what I normally use. And I wanted to find out what happened if my thickphone connected to the Zumo first.

But the point is that you can connect one phone or the other. Not both. And it is not possible (say) to pick media from one phone and smartphone link from the other. It just won't do it with the Zumo (although my car will allow music from the smartphone and calls from the thickphone).



Music Source (Apps→Media Player→Tools icon)

Having connected the smartphone though, there are now 2 media input devices from which to select in the Media Player App. So you can choose either MP3 or Bluetooth. The image on the left shows both in orange, but you can select only one at a time. This can be done without affecting the BlueTooth connections.

It is best to connect the headset to the Zumo first or at least have it turned on when before the Zumo is turned on. Everything should then connect automatically. But there may be times when you need to set the connections manually, so it is a good idea to know how the screen outlined in green should appear for your devices so that you can quickly reinstate the connection manually if necessary.

